



# The Growing Scene

The Growing Scene, Inc. 17015 Harmony Rd, Marengo, Illinois 60152

Volume 13, Issue 1

April/May 2008

**Don't Miss Our  
Spring Open House  
May 2nd, 3rd & 4th**

## CELEBRATING OUR 13TH YEAR!

By Kathleen Carr

On my refrigerator there is a magnet that has a picture of a woman that resembles June Cleaver. The woman is surrounded by beautiful red roses and she is smiling broadly. The caption reads "My Garden Kicks A\*\*". Four words are used to sum up the situation perfectly.

I first saw this magnet at my mother-in-law's house and thought it was absolutely hilarious. When I saw it at a store last fall, I just had to have it. I did struggle though (albeit for only about 30 seconds) before making the purchase. Is it okay to have a magnet on our refrigerator that contains a profanity?

When I encourage our children to get their own milk out of the refrigerator should they see Mrs. Cleaver smiling broadly and using a word that would cause them to get a time out?

In this world filled with endless opportunities for us to fall short, or perhaps fail, sometimes we need something to feel proud of. My garden is something that I feel proud of. Am I proud of the soccer balls that our dog leaves all over? No. Am I proud of the weeds that will inevitably be taller than the flowers at times this summer? No. Is my garden perfect, no not by a very long shot. But

sometimes, just sometimes, do I take a few minutes and walk around and think-Wow! Yes!

It is my hope that this year you can feel proud of something in your yard. That you can say "Wow". And that you might even, putting modesty aside for a moment, think "My Garden Kicks A\*\*!" Chris, Mary, Sarah, Christopher and I look forward to seeing you at our Spring Open House. It is a great way to celebrate Spring's arrival after a very long winter.



## WELCOME PAT! By Melissa Shippy

Pat Reinhart has joined the Growing Scene's team this year as a Landscape Designer and Garden Center Salesperson. Pat graduated from McHenry County College in December, 2006, with an A.A.S., Horticulture degree, emphasizing in landscape de-

sign. She appreciates all types of landscapes, from natural to formal, and enjoys helping others achieve their design goals. Having raised her family in the Peoria area, Pat and her husband moved to Crystal Lake in 2002. She has 4 children, 11 grandchildren, a dog, and a cat.

We are excited to add Pat to our design and garden center team.

You will see Pat at the Garden Center where she can help answer any questions you may have or you can request Pat to design a unique landscape design to fit your needs!

### Inside this issue:

<i>Spring Open House</i>	2
<i>Display Gardens</i>	2
<i>5 New Plants</i>	2
<i>Jeepest Creepers</i>	3
<i>How winter will effect plants</i>	3
<i>Grandma's Recipe</i>	3



### Dates to Remember:

#### Upcoming Business Expos:

- Hampshire Chamber of Commerce April 19 & 20
- Del Webb's Edgewater "April in Paris" Ladies Luncheon April 26
- Del Webb Sun City Expo at Prairie Lodge May 16

**The Growing Scene's Open House** May 2-May 4

**Mother's Day Weekend in our garden** May 10 & May 11

**Multi Chamber Mixer with B&K Power Equipment** May 20 for Huntley, Hampshire and Marengo Chamber of Commerce Members

## SPRING OPEN HOUSE

By Melissa Shippy

It has become a rite of Spring. The Annual Spring Open House will be held this year on Friday, May 2, Saturday, May 3 and Sunday, May 4. Please plan on attending. It is a time to catch up on the family news, visit with your neighbors and check out the new plant varieties. We will be open all 3 days from 9:00-6:00.

This year we are very excited to be donating a portion of our proceeds to Animal House Shelter in Huntley. We will hopefully have a few adorable dogs up for adoption in attendance on Saturday. This will depend on the availability of their volunteers. The donated proceeds will benefit the Kitty and Puppy Shower they are having on May 17, 2008.

At the Open House, we will begin with coffee and doughnuts in the morning and move right into appetizers and soft drinks in the afternoon. Free Drawings will be held all three days. We look forward to seeing you there!



### *Advice from a Dog*

Be loyal. Delight in the simple joys of a long walk. Unleash your talents. Hide your favorite snack. Make new friends. Learn new tricks, no matter your age. When loved ones come home, always run to greet them.

## IT'S IN THE MAIL

By Kathleen Carr

Check your mailbox in late April for our re-designed Open House Postcard and Company Brochure. Both contain valuable coupons that you can be redeemed at our Garden Center!



You should have received a Customer Survey in April. We have received quite a few surveys back and have even implemented a few changes as a result. Thankfully there was a common theme among the surveys- "Keep up the good work" Thank you and we will! Make sure to fill out your customer survey as soon as possible. They must be received by May 30th to qualify for a special drawing. Three winners will each receive a \$100 gift certificate to our garden center. The winners will be called and their names announced in the June Newsletter.

## LOOK FOR THESE 5 NEW PLANTS AT OUR GARDEN CENTER!

By Melissa Shippy

We are pleased to announce the addition of Bailey Nurseries as a supplier this year. In our order to expand our selection of trees and shrubs for you at the Garden Center we have brought in a wide variety of plants and trees from Bailey Nursery in a variety of sizes and price points to fit your every need! Bailey Nurseries is a fourth-generation family-owned nursery serving customers throughout the U.S. and Canada.

Throughout Bailey Nurseries long history, they have earned a reputation as a leader in the nursery industry with inventive techniques, high-quality plants and active involvement in industry organizations. Here are 5 New Plants to look for at the Garden Center this year from Bailey Nurseries:

### **Bailey Compact Amur Maple**

Compact with fragrant flowers and terrific fall color. Height 7-9' and Spread 7-8'. Sun or part-shade

### **Golden Carousel Barberry**

Golden yellow leaves on upright form. Light shade does well to protect leaves. Height 4-5' and spread 3-4'.

### **Harry Lauder's Walking Stick-Hazel**

Noted for its contorted, twisted growth. Height 6-8' and spread 4-6'.

### **Blushing Bride Hydrangea**

Fast rebloomer with pure white blooms. Height and Spread 3-6'.

### **My Monet Weigela**

Variegated, green and white foliage with purplish-pink blossoms. Height 12-18" and Width 12-15".

## JEEPERS CREEPERS; More than just a funny name

By Melissa Shippy

Another new addition to our Garden center this year are Jeepers Creepers! Down Low & Fun to Grow, these durable perennial plants have low spreading habits that make them ideal for use as a ground cover, lawn substitute, pathway or edging plant.

- Groundcover
- Eco-friendly Lawn Substitute
- Pathway & Patio Plants
- Container Plants
- Many Other uses

Look for lady bug display and you will find our wide selection of Jeepers Creepers. Listed below are just a few of the varieties we will have in stock:

**Ajuga ‘Chocolate Chip’**

**Carpet Bugle**

Traffic Tolerance: Light

**Antennaria ‘Rubra’**

**Pink Pussy Toes**

Traffic Tolerance: Moderate

**Cerastium tomentosum**

**Snow-in-Summer**

Traffic Tolerance: Light

## GRANDMA’ RECIPE BOOK

*From Grandpa’s Garden to Grandma’s Kitchen*

### Asparagus Salad with Walnuts

1 lb. Fresh asparagus, trimmed

Salt to taste

3/4 cup walnut pieces

5 Tablespoons sugar

3 Tablespoons soy sauce

3 Tablespoons cider vinegar

Cook the asparagus in lightly salted water in a saucepan for 7-10 minutes or until tender; drain. Cut into bite-size pieces and place in a bowl. Add the walnuts and toss to mix. Combine the sugar, soy sauce and vinegar in a small bowl and mix well. Pour over the asparagus mixture and toss gently. Marinate for several hours.



## HOW WILL THIS RECORD BREAKING WINTER AFFECT OUR PLANTS?

By Kathleen Carr

I asked someone today “Did you have a good winter?” She said “Ugh, can you ever have a good winter?” Very good point. Maybe the better question is “Did our plants have a good winter?” So far from my on-site inspections, it wasn’t too bad of a winter for our plants. Of course this time of year, it is much easier to judge the health of the evergreens than the deciduous trees. I have seen a few evergreen shrubs and 1 evergreen tree that were subjected to too much moisture and/or too much wind. There is a saying in the landscaping industry- “Evergreens don’t like wet feet”. We had 3 Dwarf Alberta Spruce that did not tolerate the high winds in our display gardens.

A good way to judge weather or not your deciduous plants made it through the winter is to scratch the bark on a small

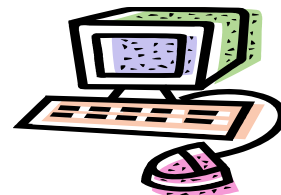
twig. If the area under the bark is yellow or green, then the leaves on that twig should be appearing soon. If the area under the bark is brown, then that particular twig is dead.

Snow acts as an insulator for plants during the winter. The snow can protect plants from below zero freezing temperatures and high winds. The snow protects plants, unless of course, there is so much that it causes the branches to become too weighted down and break under the heavy load. If this happens, be sure to make a clean, pruning cut and remove the dead branches.

I hope that your plants did have a good winter. As always, please be sure to call or come out to the garden center if there is something we can help you with.



## OUR WEBSITE: NEW & IMPROVED



Stop!  
Please, stop reading this and proceed immediately to  
[www.thegrowingscene.com](http://www.thegrowingscene.com).  
It will be worth the time-I promise.

*Kathi*

P. S. Please pass the word to any children that you know to check out The Carr Kids Page on our website. Mary is waiting to here from them.



**The Growing Scene, Inc.**  
**17015 Harmony Rd,**  
**Marengo, Illinois 60152**

Phone: 815-923-7322

Fax: 815-923-7319

E-mail: tgsinc12@msn.com

Website: www.thegrowingscene.com

**Hours:**  
**Monday-Saturday 9-6**  
**Sunday 10-5**



***A Garden Center and  
Landscaping Company***

**JOIN US FOR OUR SPRING OPEN HOUSE, FRIDAY, MAY 2,  
SATURDAY, MAY 3, AND SUNDAY, MAY 4 FROM 9:00AM-6:00PM  
REFRESHMENTS, SPECIAL SALES AND GIVE-AWAYS!**

The Growing Scene Gazette, is a publication of **The Growing Scene, Inc.** **The Growing Scene** is a garden center and landscaping company located at 17015 Harmony Road, Marengo. The phone number is 815-923-7322. [www.thegrowingscene.com](http://www.thegrowingscene.com)

**The Growing Scene, Inc. Staff:**

**Chris, Kathi, Mary, Sarah,**

**Christopher Carr:** Owners

**Melissa Shippy:** Garden Center Manager

**Jaime Cortez:** Landscape Foreman

**Noelle Landwehr:** Financial Secretary

**Pat Reinhart, Meggie Becker and Angie Haley:** Garden Center Sales Staff